

MEXICO - 2025 Spring-Summer Bean Crop Cycle

Special Weekly Seasonal Report – Week of August 18th

Important Facts of the Spring-Summer Cycle for beans:

Relevance: Most important bean production season, contributing with 75% of the black and pinto beans for the year. Mexican beans are produced in two cycles: Spring-Summer and Fall Winter

Planting: *IRRIGATED BEANS IN MAY-JUNE. DRYLAND BEANS IN JUNE-JULY-AUGUST*
95% dryland: around 26% planted in June, 48% in July and around 15% in August. Remaining 10% irrigated planted in May and early June

Harvesting: Late September for the irrigated. October and November for dryland beans
Most important states: beans in Mexico are planted in all states, however, the most important with commercial production, followed by the USDBC: Zacatecas, Durango, Chihuahua, San Luis Potosi and Guanajuato.

Situation until August 18th, 2025

Grasshopper Plague

Chihuahua: last weekend local media announced that Chihuahua is now also having grasshopper plague in beans and wheat, not clear how many bean hectares have been damaged.

Durango: Reportedly continues to expand in Durango, affecting approximately 6,700 bean hectares, -up from 1,800 hectares last week-, in 4 rural districts. SADER with Rural Development, are providing the pesticide, and are calling to fumigate in an organized format, as some producers are doing it on their own.



Last week we reported:

-According to local media, an aggressive Grasshopper plague is attacking bean and corn crops in Durango and Zacatecas. Although the news just transpired this weekend, **it's being said that the plague started a more than a month ago, since late June in Zacatecas, and was left neglected.**

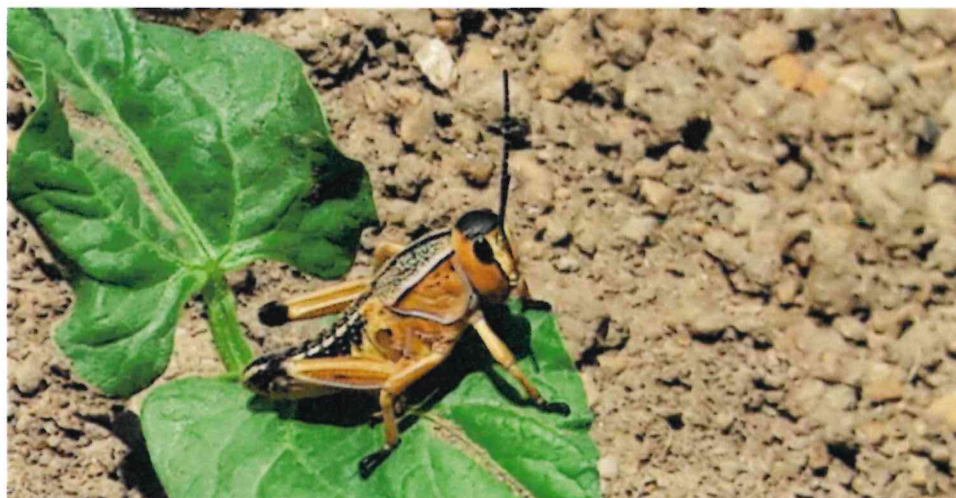
-Zacatecas, is reportedly the most affected by the grasshopper plague with close to 12 thousand hectares of beans, corn and pumpkin, in 12 rural districts reporting damage, including Fresnillo, Sombrerete, Jerez, Calera, Guadalupe, Morelos, Sain alto, Villanueva, Jimenez de Teul, Valparaiso, not exactly clear how many bean hectares have been damaged; however, it has been mentioned that the insects are targeting the youngest bean leaves

-Durango, reportedly, around 1,800 bean hectares have been affected in four rural districts in Durango: Canatlan, Panuco de Coronado and Durango

-Federal and local authorities reported that they are fighting the plague with the pesticide **Malation** and the help of drones, and that the two species present are **Brachystola Mexicana** and **Brachystola Magna**

-It will be interesting to see how this plague is managed, considering the small contingency fund resources available, that reportedly do not surpass MX\$500 thousand / US\$27,000 for both states

-In the frame of theses happenings, it is crucial to have more visual information from the USDBC Mexico Bean Crop report, that has not started yet.



-Although no official numbers, it is estimated that the five bean states followed by the USBDC: Zacatecas, Durango, Chihuahua, San Luis Potosi and Guanajuato, have completed their bean planting by now, that according to the government could reach 1 million hectares in the five states:

GOVERNMENT'S OFFICIAL 2025 SPRING - SUMMER CYCLE MEXICO DRY BEANS PLANTING SEASON IRRIGATED + DRYLAND SITUATION UNTIL June 30, 2025								
STATE	SURFACE - HECTARES				PRODUCTION - MT		YIELD KG/HA	
	Government's Planting Intention hectares	Planted hectares according to Government	Harvested according to government	Damaged according to government	Government Expectation	Obtained according to Government	Expected by Government	Obtained according to Government
CHIAPAS	72,625	52,651	-	2	44,688		620	
CHIHUAHUA	75,520	12,139	-		73,773		980	
DURANGO	219,852	1,411	-		130,961		600	
GUANAJUATO	46,230	24,498	-		37,373		810	
GUERRERO	13,182	1,199	-		11,493		870	
MEXICO	2,623	1,878	-		2,976		1,130	
MICHOACAN	2,420	1,137	-		3,033		1,250	
OAXACA	28,062	15,722	-		21,640		770	
PUEBLA	42,789	35,995	-		37,200		870	
QUERETARO	3,322	2,461	-		2,619		790	
SAN LUIS POTOSI	123,256	53,863	-		67,658		550	
ZACATECAS	630,714	99,119	-		331,701		530	
OTHER	50,976	26,843	-		91,947		1,804	
TOTAL	1,311,571	328,915	-	148	857,062		650	

Source: SIAP