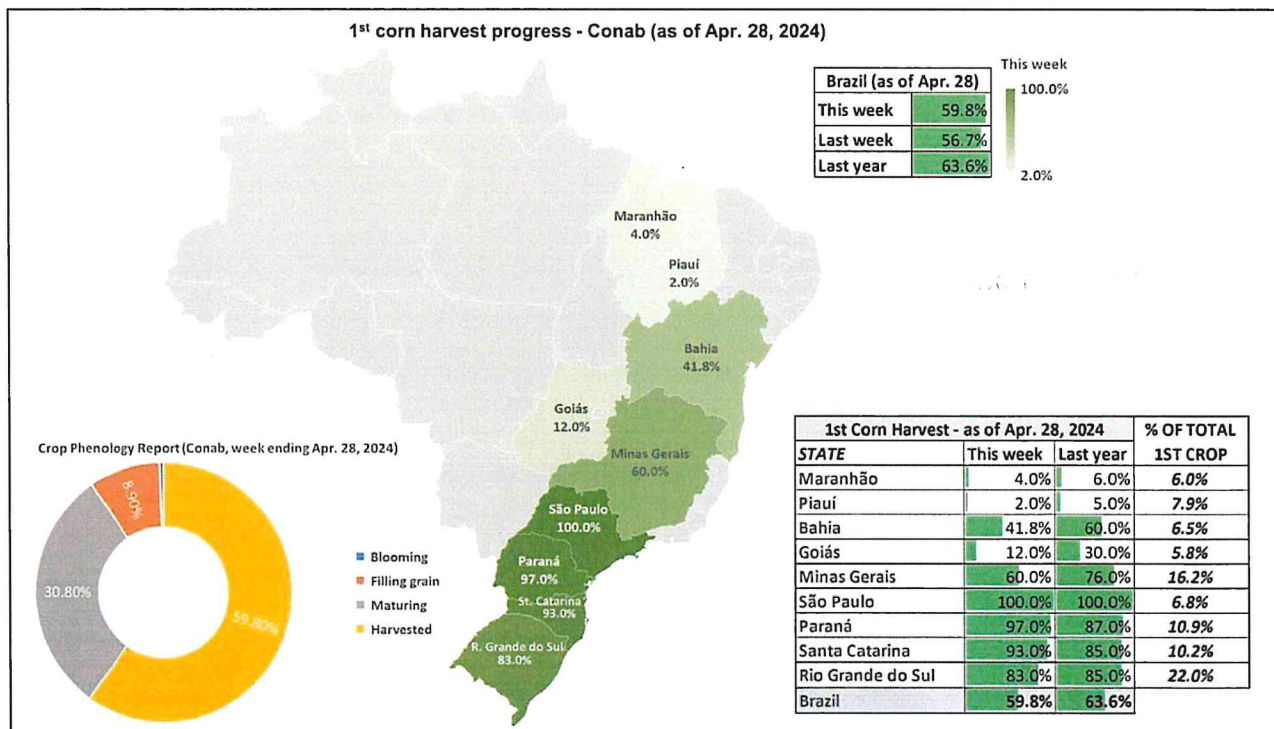
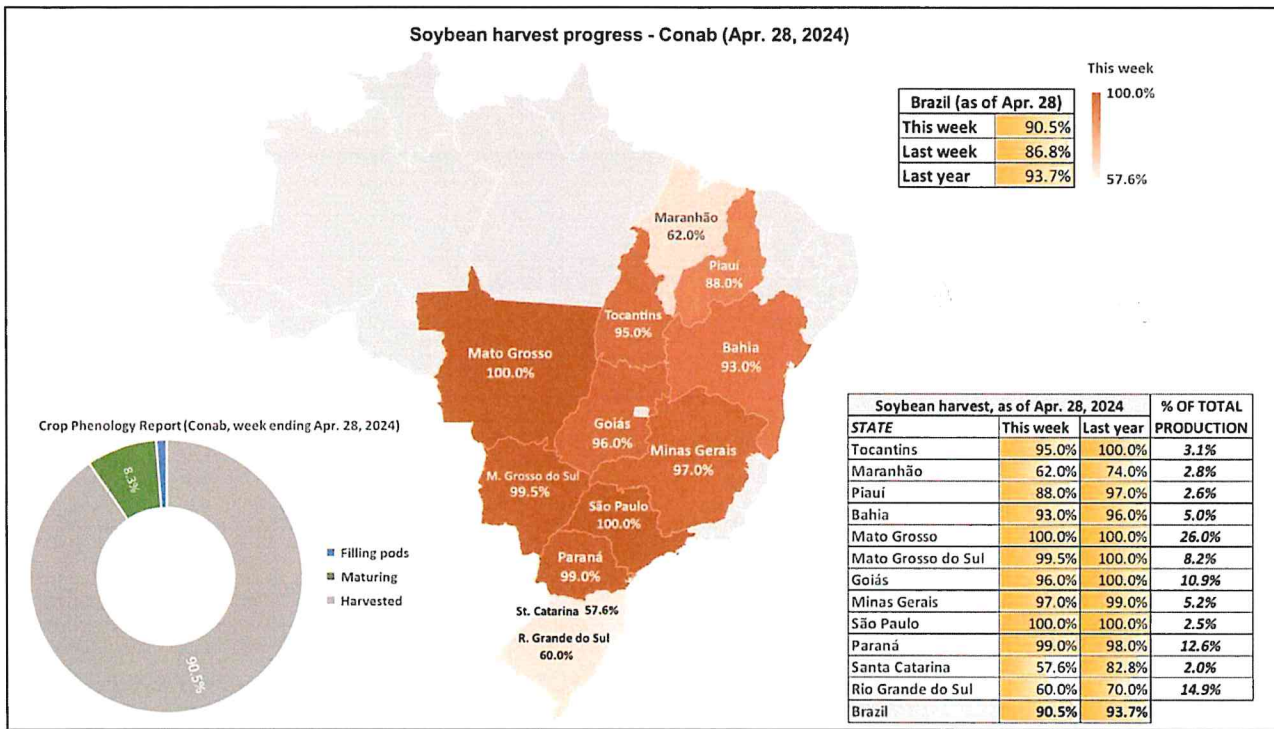


4/30/24 ATI Brazil weekly crop progress maps

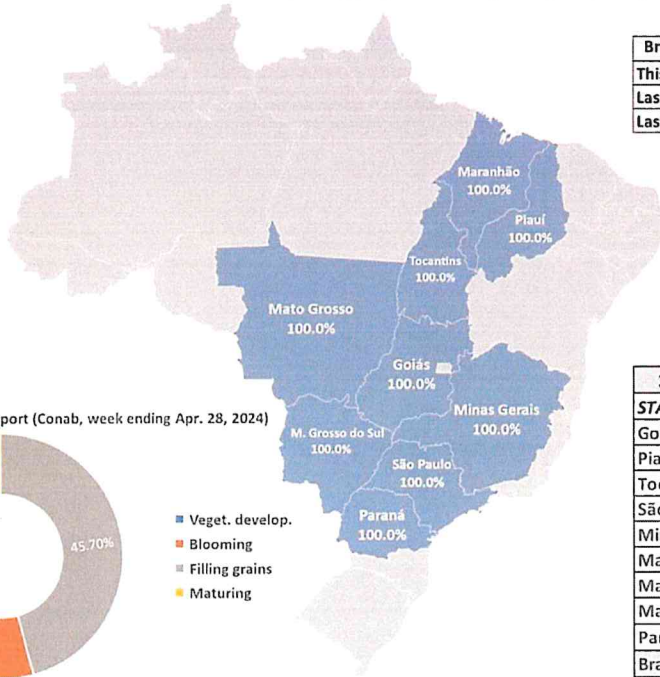


2nd corn planting progress - Conab (as of Apr. 28, 2024)

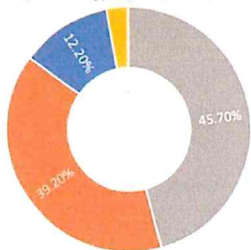
28/Apr

| Brazil (as of Apr. 28) | |
|------------------------|--------|
| This week | 100.0% |
| Last week | 100.0% |
| Last year | 100.0% |

100.0%



Crop Phenology Report (Conab, week ending Apr. 28, 2024)



- Veget. develop.
- Blooming
- Filling grains
- Maturing

| 2nd Corn Planting - as of Apr. 28, 2024 | | | % OF TOTAL |
|---|-----------|-----------|------------|
| STATE | This week | Last year | 2ND CROP |
| Goiás | 100.0% | 100.0% | 9.7% |
| Piauí | 100.0% | 100.0% | 0.6% |
| Tocantins | 100.0% | 100.0% | 1.9% |
| São Paulo | 100.0% | 100.0% | 2.7% |
| Minas Gerais | 100.0% | 100.0% | 3.0% |
| Maranhão | 100.0% | 100.0% | 1.7% |
| Mato Grosso do Sul | 100.0% | 100.0% | 12.4% |
| Mato Grosso | 100.0% | 100.0% | 47.6% |
| Paraná | 100.0% | 100.0% | 16.2% |
| Brazil | 100.0% | 100.0% | |